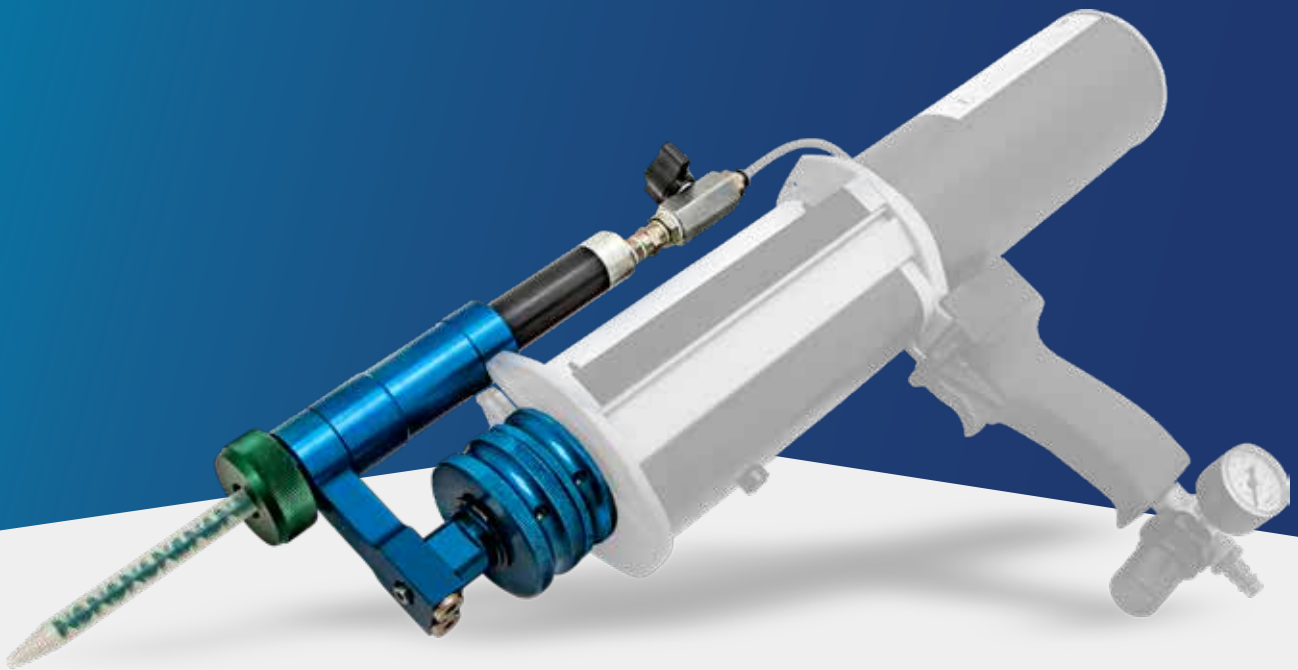


TARTLER

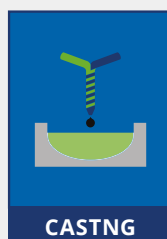


LC-DCM

2K CARTRIDGE MIXER

The first universal mixer attachment for many common cartridge systems for a dynamic mixing of components

with changeable adapters



CASTING



GLUING

LC-DCM

2K CARTRIDGE MIXER

POSSIBLE APPLICATIONS

- ▶ Repairs
- ▶ Rework
- ▶ Optimization of surfaces with pneumatic cartridge guns



The cartridge mixer is attached to an existing gun



The various changeable adapters allow the use of different cartridges



For application and info movies please check our YouTube channel:

<https://yt.vu/+tartler-int>



Get some more information about the LC-DCM Cartridge Mixer series here:

<https://carridgemixer.gr8.com>

The cartridge mixer attachment LC-DCM is a universal attachment for numerous common cartridge systems. It allows to use the quality advantages of the dynamic 2-component synthetic resin mixing technology from the automated series production also in the manual application of small quantities and to obtain better results by using dynamic mixing. Low-quantity users who process cast resins and adhesives for repairs, reworks or the surface finishing with double cartridge dispenser from Sulzer (Mixpac), Nordson (Side x Side) or other manufacturers particularly stand to benefit from this.

In addition to its universal adapter connection, the new cartridge mixer LC-DCM offers yet another key advantage: Irrespective of the processed materials, with the same configuration and the same pressure it offers a multiple volume increase compared using a static mixer recommended by the cartridge material manufacturer – or filling company. Additionally, an advantage not to be overlooked is that it can be used for extreme mixing ratios and high viscosity differences between materials.

- ▶ Dynamic mixing system for many common cartridges
- ▶ Multiple increase of the flow rate possible with similar configuration and pressure (depending on material)
- ▶ Suitable for extreme mixing ratios and large viscosity differences
- ▶ Precise mixing of 2K systems
- ▶ Neither cartridge nor material linked
- ▶ Reusable adapter for more flexibility

AVAILABLE CARTRIDGE ADAPTERS

- ▶ Production of further adapters on request



SULZER MIXPAC,
F-System 10:1
F-System 4:1



SULZER MIXPAC,
F-System 1:1
F-System 2:1



SULZER MIXPAC,
C-System 10:1



SULZER MIXPAC,
C-System 1:1
C-System 2:1



Nordson EFD
Side x Side - 200ml

TECHNICAL DATA

Components	2 components
Viscosity range	according to filler/material manufacturer
Mixing ratio	100:10, 100:25, 100:50, 100:100
Output	up to 80% higher output possible
Cartridge systems	e.g. Nordson and Sulzer (production of further adapters on request)

TARTLER



TARTLER GmbH

Relystr. 48
D-64720 Michelstadt

Phone: +49 (0) 6061 96 72-0

E-Mail: info@tartler.com

Web: www.tartler.com